

Word of the Day

Autumn Term 2024

Week 4 – 23rd September 2024



This Week's Words

Grasshopper

tear
office
spare
chipped
lift

Shinobi

tolerate
mutter
fixation
unveil

VN VOCABULARY

Grasshopper Word of the Day

Word of the Day: picnic
(pic-nic)

Word Class: (verb / noun)

Definition: If you tear paper, cloth, or another material, or if it tears, you pull it into two pieces or you pull it so that a hole appears in it.

Phrases:

Synonym: word
word

Antonym: word
word

Rhyme: word
word

Link Word: word
word

Phrase Number One: The was a hole in Freddie's new school picnic.

Phrase Number Two:

Shinobi Word of the Day

Word of the Day: tear
(tear)

Word Class: (verb / noun)

Definition: If you tear paper, cloth, or another material, or if it tears, you pull it into two pieces or you pull it so that a hole appears in it.

Phrases:

Synonym: word
word

Antonym: word
word

Prefix / Suffix: word
word

Link Word: word
word

Phrase Number One: The was a tear in Freddie's new school book.

Phrase Number Two:

'Words unlock the doors to a world of understanding...'

This Week's Words

Grasshopper

germ

problem

loose

shy

mask

Shinobi

confuse

caught

shallow

navigate

request



VOCABULARY NINJA

Grasshopper (Tier 1)

germ

problem

loose

shy

mask



VOCABULARY NINJA

Shinobi (Tier 2)

confuse

caught

shallow

navigate

request



VOCABULARY NINJA



Grasshopper Word of the Day

Word of the Day:

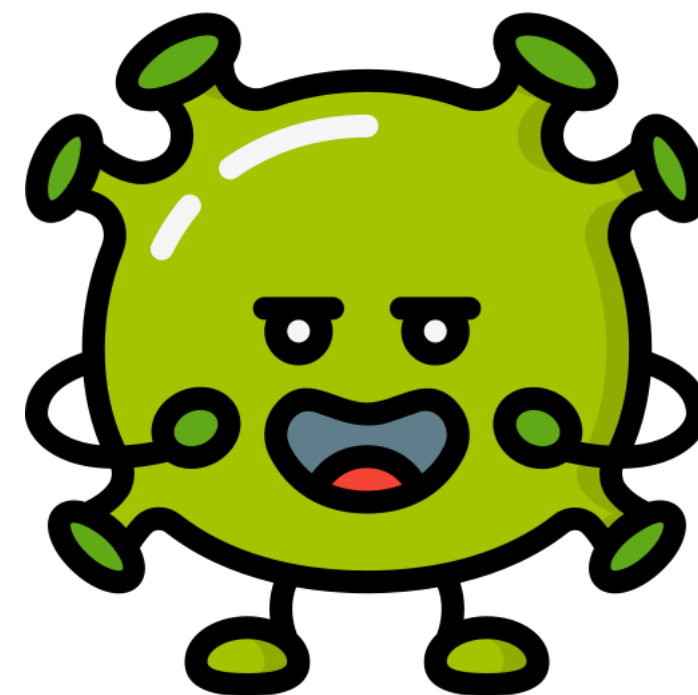
Pronunciation / Syllables

germ
(germ)

Word Class
(noun)

Definition:

A germ is a very small organism that causes disease.



It's important to wash your hands to prevent germs.

Synonym:

bug

virus

Antonym:

Prefix / Suffix:

-s

Rhyme:

term

firm

Link Word:

harmful

microscopic



Grasshopper Word of the Day

Word of the Day:

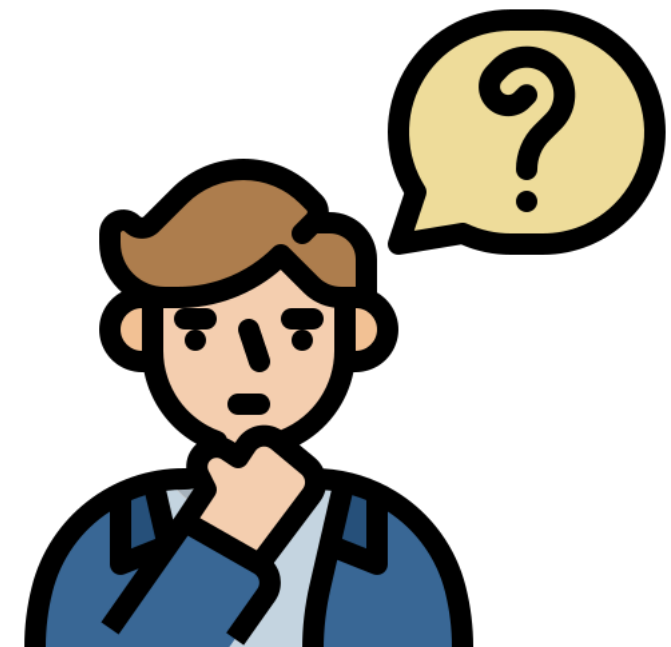
Pronunciation / Syllables

problem
(*prob-lem*)

Word Class
(noun)

Definition:

A problem is a situation that is unsatisfactory and causes difficulties for people.



Bert asked for help with a math **problem**.

Synonym:

complication

dispute

Antonym:

assistance

help

Prefix / Suffix:

multi-

-s

Rhyme:

Link Word:

complex

pressing



Grasshopper Word of the Day

Word of the Day:

Pronunciation / Syllables

loose
(loose)

Word Class
(adjective)

Definition:

Something that is loose is not firmly held or fixed in place.



Bronte had **loose** change in per pocket.

Synonym:

baggy

relax

Antonym:

strict

tight

Prefix / Suffix:

-en

-ly

Rhyme:

use

reduce

Link Word:

slightly

baggy



Grasshopper Word of the Day

Word of the Day:

Pronunciation / Syllables

shy
(shy)

Word Class
(adjective)

Definition:

A shy person
is nervous and uncomfortable in the
company of other people.



Robert was too **shy** to answer the question.

Synonym:

coy

sheepish

Antonym:

bold

proud

Prefix / Suffix:

-ness

-ly

Rhyme:

high

why

Link Word:

quietly

nervously



Grasshopper Word of the Day

Word of the Day:

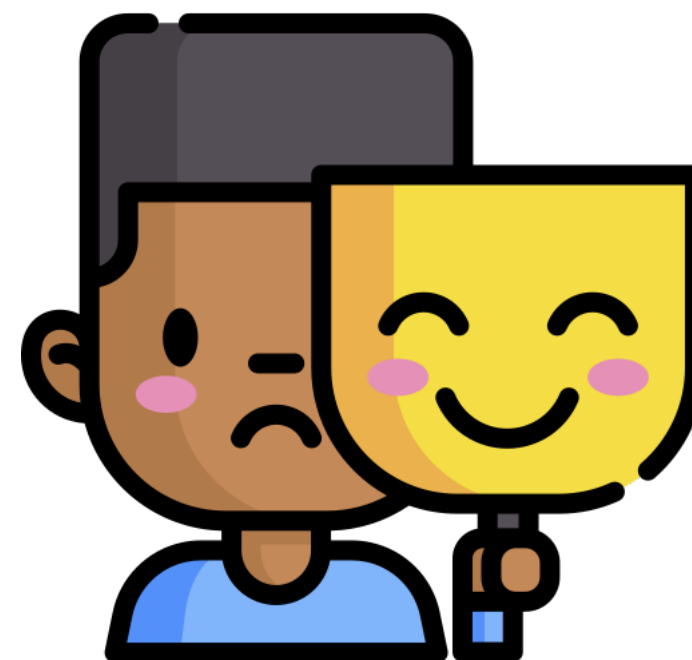
Pronunciation / Syllables

mask
(mask)

Word Class
(verb / noun)

Definition:

If you describe someone's behaviour as a mask, you mean that they do not show their real feelings or character.



Simon was trying to **mask** his frown.

Synonym:

hide

cover

Antonym:

reveal

uncover

Prefix / Suffix:

-ed

-ing

Rhyme:

role

goal

Link Word:

entirely

completely



Shinobi Word of the Day

Word of the Day:

Pronunciation / Syllables

confuse
(con-fuse)

Word Class
(verb)

Definition:

If you confuse two things,
you get them mixed up, so that
you think one of them is the other
one.



The instructions given to the class began to **confuse** them.

Synonym:

baffle

misinform

Antonym:

facilitate

support

Prefix / Suffix:

-ed

-ing

Rhyme:

choose

shoes

Link Word:

utterly

slightly



Shinobi Word of the Day

Word of the Day:

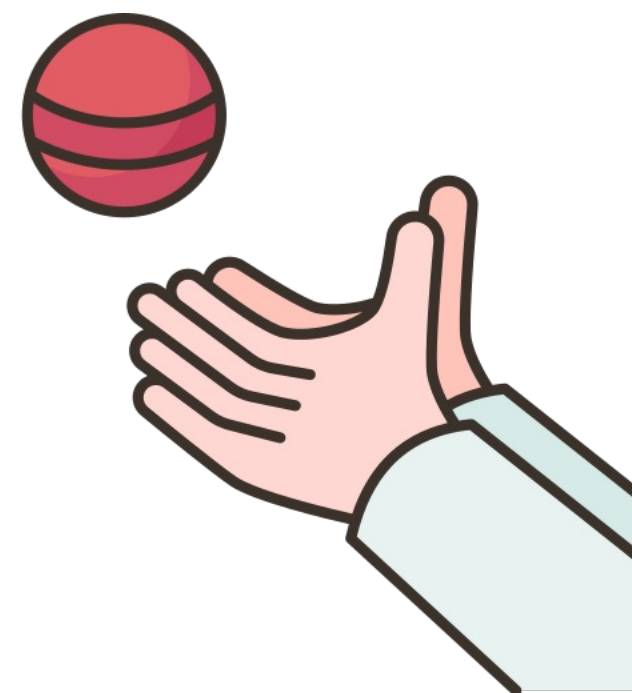
caught
(*caught*)

Word Class
(verb)

Pronunciation / Syllables

Definition:

If you catch an object that is moving through the air, you seize it with your hands. Caught is the past tense and past participle of catch.



Justin **caught** the ball when playing cricket.

Synonym:

grabbed

captured

Antonym:

lost

dropped

Prefix / Suffix:

un-

Rhyme:

bought

sort

Link Word:

red-handed

suddenly



Shinobi Word of the Day

Word of the Day:

shallow
(shal-low)

Word Class
(adjective)

Pronunciation / Syllables

Definition:

A shallow container, hole, or area of water measures only a short distance from the top to the bottom.



The water was **shallow** in the paddling pool.

Synonym:

hollow

empty

Antonym:

full

raised

Prefix / Suffix:

-s

-er

Rhyme:

Link Word:

slightly

barely



Shinobi Word of the Day

Word of the Day:

navigate
(nav-i-gate)

Word Class
(verb)

Pronunciation / Syllables

Definition:

If you navigate an obstacle, you move carefully in order to avoid hitting the obstacle or hurting yourself.



Mandy **navigated** herself around the classroom.

Synonym:

handle

manoeuvre

Antonym:

neglect

forget

Prefix / Suffix:

-ed

-tion

Rhyme:

Link Word:

carefully

skilfully



Shinobi Word of the Day

Word of the Day:

Pronunciation / Syllables

request
(re-request)

Word Class
(verb / noun)

Definition:

If you request something, you ask for it politely or formally.



Mateo made a **request** to hand out the class books.

Synonym:

appeal
demand

Antonym:

answer
reply

Prefix / Suffix

-ed
-ing

Rhyme:

best
west

Link Word:

politely
urgently

Vocabulary Laboratory



Describe / Definition:

Use it in a sentence:

Focus Word (write below):

Word Class:

Synonyms:

(words with same / similar meaning)

Antonyms:

(words with opposite meaning)

Draw your sentence:

Rhymes:

(words that sound the same)

Link Words:

(Example: football = pitch, team, player)

Vocabulary Visualiser

Draw the
Grasshopper words
and bring them to life.



Word: germ

Word: loose

Word: problem

Word: shy



Vocabulary Visualiser

Draw the **Shinobi**
words and bring
them to life.



Word: confuse

Word: shallow

Word: caught

Word: request



Matching Meanings

Draw lines from the **Grasshopper** words to their definitions.



Grasshopper Word

Grasshopper Definitions

germ

Something that is *** is not firmly held or fixed in place.



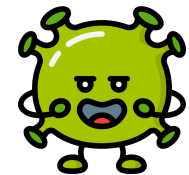
problem

A *** person is nervous and uncomfortable in the company of other people.



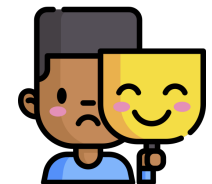
loose

A *** is a very small organism that causes disease.



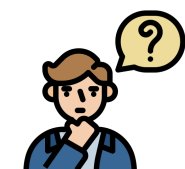
shy

If you describe someone's behaviour as a ***, you mean that they do not show their real feelings or character.



mask

A *** is a situation that is unsatisfactory and causes difficulties for people.



Matching Meanings

Draw lines from the **Shinobi** words to their definitions.



Shinobi Word

Shinobi Definitions

confuse

If you *** an obstacle, you move carefully in order to avoid hitting the obstacle or hurting yourself.



caught

If you *** an object that is moving through the air, you seize it with your hands. *** is the past tense and past participle of catch.



shallow

A *** container, hole, or area of water measures only a short distance from the top to the bottom.



navigate

If you *** something, you ask for it politely or formally.



request

If you *** two things, you get them mixed up, so that you think one of them is the other one.





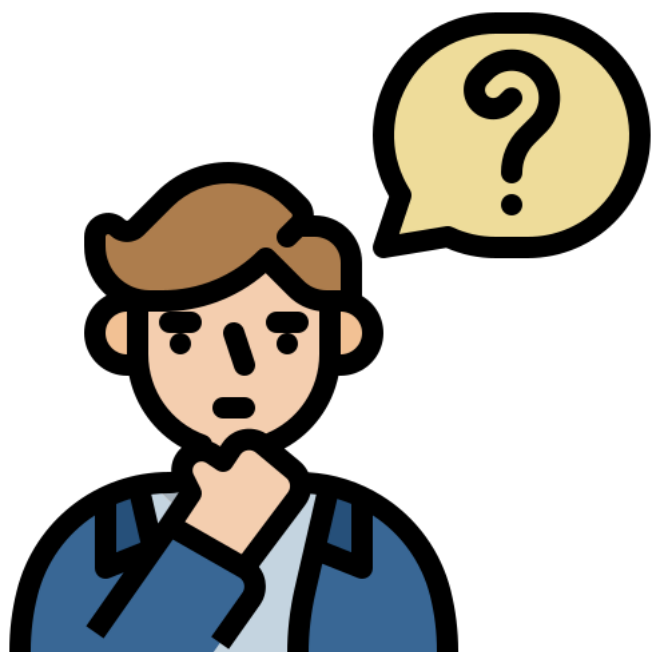
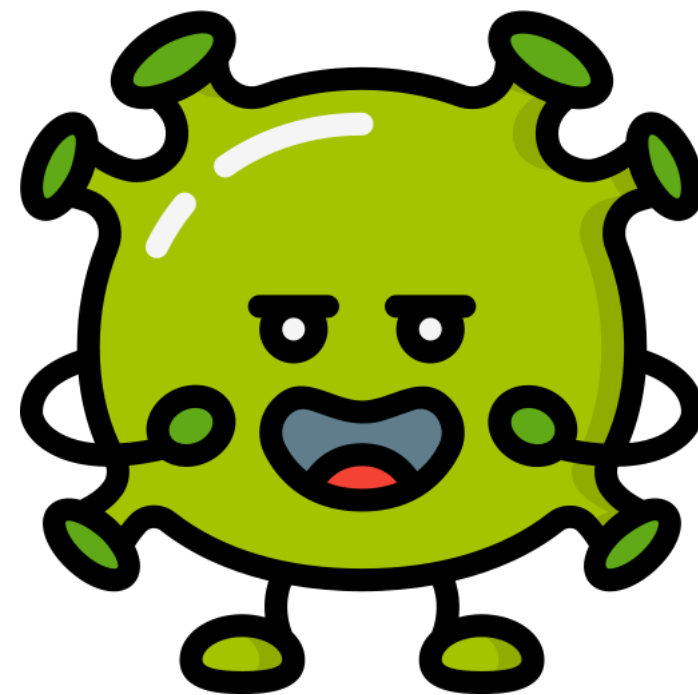
Display Slips

The following slides are for classroom display. As you teach each Word of the Day, words can be displayed in the classroom to enable pupils to use the taught vocabulary in an independent manner.





germ



problem





loose

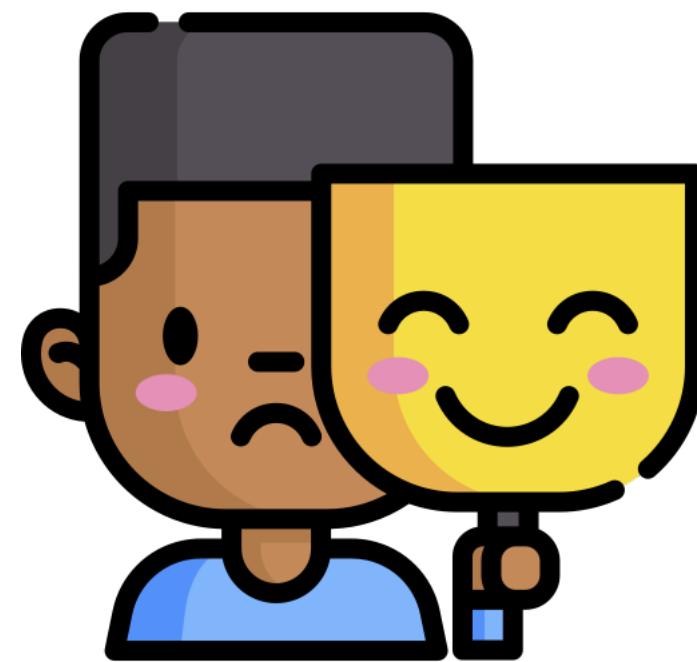


shy





mask

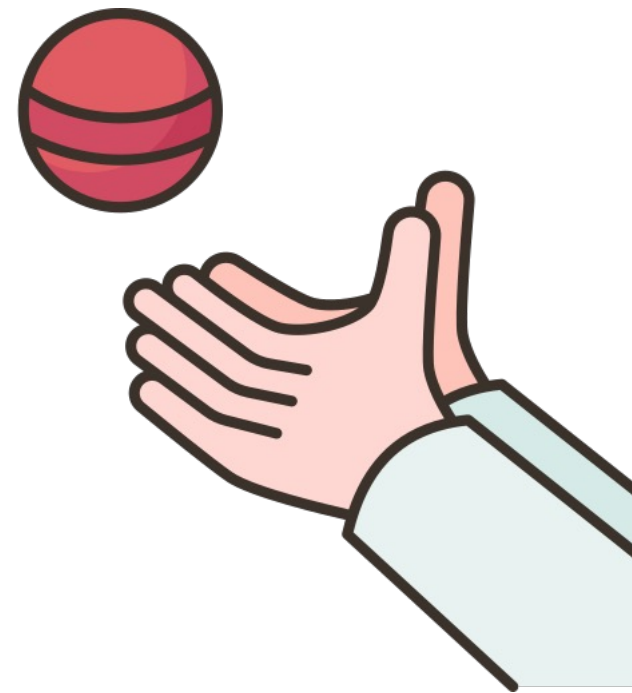


confuse





caught



shallow





navigate



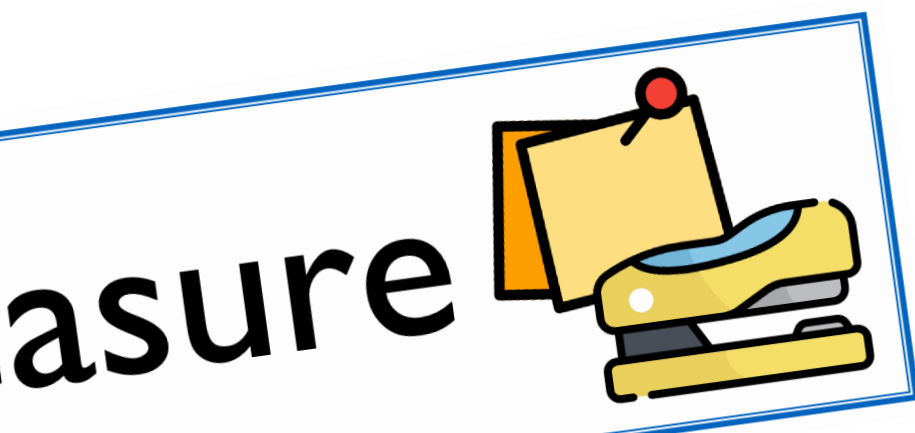
request





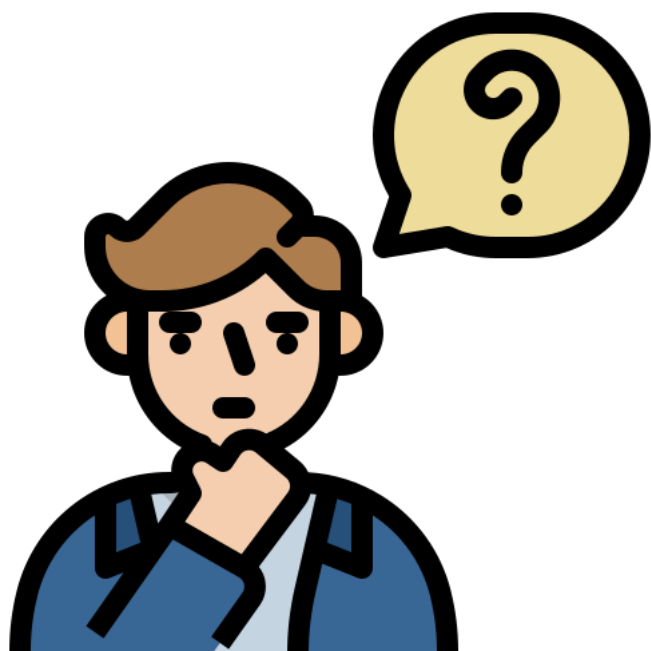
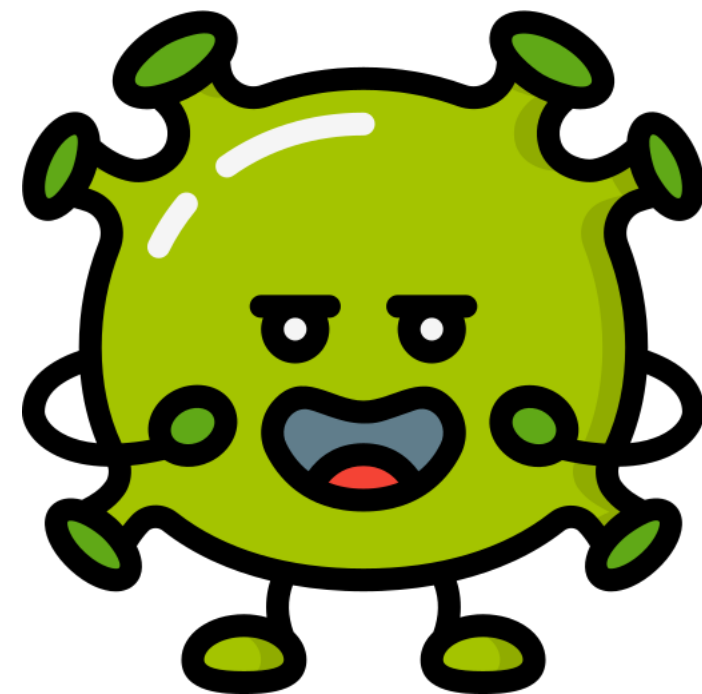
Font Variation

The following display slips contain the same words, but have a more regular font, which have a more regular formation of 'a' and 'g'. Futura is the name of the font.





germ



problem





loose

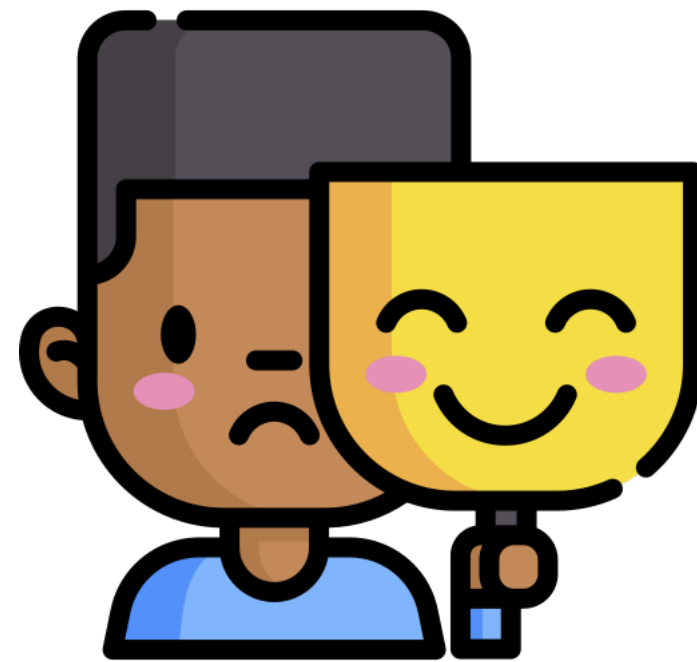


shy





mask

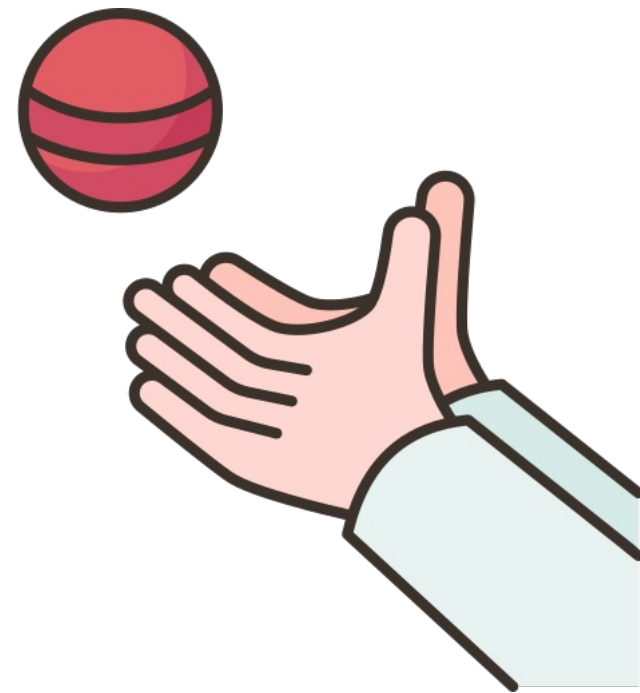


confuse





caught



shallow





navigate



request

